

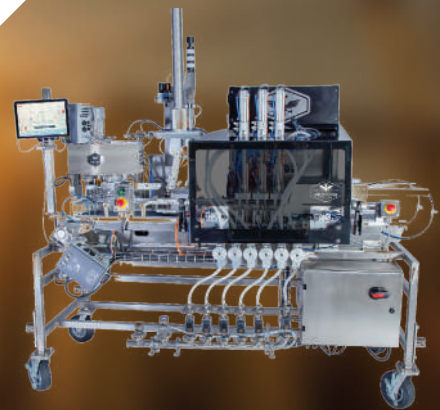
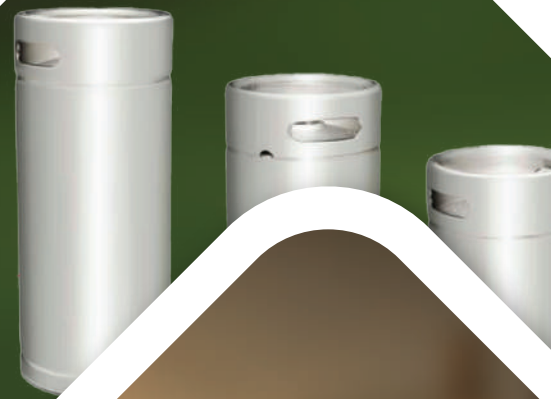


LUMIERE

This is the Beginning

Lumiere Technologies Pvt Ltd

Better Packaging, Better Impact



Food & Beverage, Breweries, IMFL & Distilleries, Craft Beer Packaging Line, Beer Dispenser

ENHANCE O₂ AND CO₂ MANAGEMENT WITH OUR WIDE RANGE OF QUALITY CONTROL EQUIPMENT

O₂ AND CO₂ MEASUREMENT

O₂ Gehaltmeter, type o-DGM

Determines the dissolved oxygen (DO) content, the O₂ content in gases and the TPO in a package (Uhlir method).

CO₂/O₂ Gehaltmeter, type c-DGM

Measures the dissolved CO₂ content, DO content, O₂ content in gases and the TPO in a package (Uhlir method).

CO₂ Gehaltmeter

Determines the dissolved CO₂ content and comes in different executions to meet the requirements of your application:

- Intelligent CO₂ Gehaltmeter, type i-DGM
- Analog CO₂ Gehaltmeter, type GMT

Inpack TPO Meter, type TPO

Automatically determines the total O₂ content by measuring the DO and the headspace O₂ content of the packaged product in a single measurement.

Inpack TPO/CO₂ Meter, type c-TPO

Determines the DO, headspace O₂ and total O₂ content of the packaged product. In addition, the c-TPO measures CO₂.

Inpack TPO/CO₂ Meter, type c-TPO Selective

The automatic Inpack TPO/CO₂ Meter, type c-TPO Selective, offers Selective CO₂ Measurement using Henry's Law in combination with optical technology.

Automator

Automatically measures all relevant quality parameters directly in the filled package in a single measurement cycle. In addition to the basic parameters O₂ and CO₂, the system can be extended for further analysis to meet customer requirements.

Inpack 2000 CO₂ Device

Manually determines the dissolved CO₂ content in carbonated beverages filled in bottles or cans and comes in different executions:

- Inpack 2000 CO₂ Calculator, type ICC
- Inpack 2000 CO₂ Meter Digital, type ICD

Inpack 2000 Air Meter, type IAM

Determines the air content in the headspace and the total air content of the package.

CO₂-Selector

For non-invasive CO₂ measurement in the filled package. Measures the headspace CO₂ content and internal pressure, and accurately determines the dissolved CO₂ content in the package. Piercing is not required to perform the measurement.

FOAM MEASUREMENT

Nibem Foam Stability Tester, type Nibem-TPH

Measures the foam collapsing time.

Inpack 2000 Sampling Device, type ISD & ISD 2.0

For sampling from bottles or cans. Samples can be supplied to various measuring devices for analysis purposes.

Sample Bottle Filler, type SBF

For sampling beverages from tanks, pipes or kegs without air intake.

Inpack 2000 Flasher Head, type IFH

A flashing device for the creation of reproducible foam for the Nibem foam quality analysis, to be used in combination with the ISD or SBF.

TURBIDITY MEASUREMENT

Turbidity Meter, type Vos Rota 2.0

An easy-to-use and reliable instrument to measure turbidity during production and after filling. It has a measuring range of up to 500 EBC/34,600 ASBC, which makes the instrument suitable for a wide range of beer types, including very turbid beers.



c-DGM



CO₂-Selector



Automator



Nibem-TPH



MONITORING OF PROCESSES

PASTEURIZATION

Redpost PU Monitor

Monitors the pasteurization process of beer and beverages as it travels through the pasteurizer tunnel. PU's are automatically calculated and displayed. Available in three executions:

- Type RPU-353
- Type RPU-352
- Type RPU-351

Redpost Charger/Interface

Charges PU Monitor and enables data transfer from the Monitor to a PC or printer and comes in two executions:

- Type RPC-80, compatible with all Redpost PU Monitors
- Type RPC-50, compatible with PU Monitors type RPU-120*, RPU-351/352/353

BOTTLE & KEG WASHING

Bottle Monitor, type BTM

Evaluates the washing process in each compartment of the bottle washer, based on the time, temperature and conductivity of the cleaning medium.

Keg Monitor, type KEG 2.0

Perfect control of your keg washing process. Faster and better process insights due to windows-based PC-program.

TOTAL LAB SOLUTION (TLS)

Complete, customized laboratories for quality analysis throughout the entire production process. Depending on the requirements, a Total Lab covers everything from concept to commissioning to after sales service.

IN-LINE EQUIPMENT

O₂ & CO₂ MEASUREMENT

In-line quality assurance and product monitoring is critical during the production process.

In-line CO₂ Meter AuCoMet-i

Determines the dissolved CO₂ content based on Henry's Law. Can easily be extended with an O₂ sensor, due to its modular design.

In-line O₂ Gehaltmeter, type OGM

Determines the DO content based on optical O₂ measurement.

In-line O₂ Gehaltmeter, type OGM gas application

Determines the O₂ content of CO₂ gas from the fermentation, compressed gases and/or ultra pure gases, which makes it especially suitable for use in CO₂ recovery plants.

TURBIDITY MEASUREMENT

In-line Turbidity Meter, type OptHaze-i

Determines the turbidity of beer and beverages according to the MEBAK standard.

VARIOUS EQUIPMENT

Dew Point Tester, type DPT

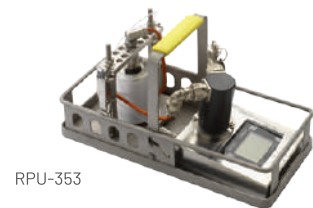
Measures the condensation temperature of humidity present in CO₂ or other gases.

Gauge Calibration Device, type GCD

Precisely calibrates pressure gauges and digital pressure sensors.

CO₂ Purity Tester, type CPT

Measures the purity of the CO₂ gas and is available in the measuring ranges 50 - 100 % v/v and 99 - 100 % v/v.



RPU-353



KEG 2.0



Bottle Monitor



AuCoMet-i



AEB Kegs—the global choice for premium stainless steel kegs. Engineered to preserve flavor and freshness in beer, wine, cider, and beverages, delivering excellence from production to pour



CODICE CODE CODE	CAPACITÀ CAPACITY INHALT CAPACITÉ	ALTEZZA TOTALE (mm) TOTAL HEIGHT MAX. HÖHE HAUTEUR TOTALE	DIAMETRO MAX. ESTERNO (mm) OUTSIDE DIAMETER AUSSENDURCHMESSER DIAMÈTRE EXTÉRIEUR	H2 (mm)	H3 (mm)	PESO (g) WEIGHT GEWICHT POIDS
1015	20 L vino	560	239	26	494	4300

CODICE CODE CODE	CAPACITÀ CAPACITY INHALT CAPACITÉ	ALTEZZA TOTALE (mm) TOTAL HEIGHT MAX. HÖHE HAUTEUR TOTALE	DIAMETRO MAX. ESTERNO (mm) OUTSIDE DIAMETER AUSSENDURCHMESSER DIAMÈTRE EXTÉRIEUR	H2 (mm)	H3 (mm)	PESO (g) WEIGHT GEWICHT POIDS
040032	20 l vino	374	320	14	315	6000
040031	20 l birra	379	320	14	320	6050
040029	25 l	441	320	14	380	6450
040028	30 l	506	320	14	448,5	6850

CODICE CODE CODE	CAPACITÀ CAPACITY INHALT CAPACITÉ	ALTEZZA TOTALE (mm) TOTAL HEIGHT MAX. HÖHE HAUTEUR TOTALE	DIAMETRO MAX. ESTERNO (mm) OUTSIDE DIAMETER AUSSENDURCHMESSER DIAMÈTRE EXTÉRIEUR	H2 (mm)	H3 (mm)	PESO (g) WEIGHT GEWICHT POIDS
1020-B2S	10,4 l	338	239	26	372	3300
1018-B2S	15,4 l	451	239	26	387	3750
1022	20 l	560	239	26	494	4300
1016-B2S	20,4	568	239	26	502	4400



CODICE CODE CODE	CAPACITÀ CAPACITY INHALT CAPACITÉ	ALTEZZA TOTALE (mm) TOTAL HEIGHT MAX. HÖHE HAUTEUR TOTALE	DIAMETRO MAX. ESTERNO (mm) OUTSIDE DIAMETER AUSSENDURCHMESSER DIAMÈTRE EXTÉRIEUR	H2 (mm)	H3 (mm)	PESO (g) WEIGHT GEWICHT POIDS
040800	10 l	338	237	28	272	3900
040700	15 l	452	237	28	386	4650
040650	20 l	568	237	28	501	5500

CODICE CODE CODE	CAPACITÀ CAPACITY INHALT CAPACITÉ	ALTEZZA TOTALE (mm) TOTAL HEIGHT MAX. HÖHE HAUTEUR TOTALE	DIAMETRO MAX. ESTERNO - D1 (mm) OUTSIDE DIAMETER AUSSENDURCHMESSER DIAMÈTRE EXTÉRIEUR	H2 (mm)	H3 (mm)	PESO (g) WEIGHT GEWICHT POIDS
040900	1/6 barrel	590	233,5	8	539	5400

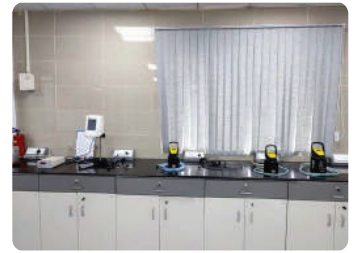


The burst disc is a safety device, which opens automatically by internal overpressure. As AEB standard, every Keg is equipped with a burst disc at the keg body.

Burst disc opens at 40 bar +/- 10 bar (580 psi +/- 145 psi)

LAB FURNITURE & EQUIPMENT

- Design of the laboratory
- Determination of the laboratory requirement
- Quality control equipments
 - Dry lab equipment
 - Micro lab equipments
 - Wet lab equipment
- Furniture





CZECH UP YOUR BEER
COOLING AND DISPENSING SYSTEMS



COMPANY

In 1992, Miloš Lindr established a production and service company in the field of dispensing and cooling systems. Thanks to several years of hard work and because of meeting its customer's requirements, a small family business grew quickly into the Lindr company, a leading Czech manufacturer of dispensing systems. Also nowadays, with the company offering interesting jobs to more than one hundred people, and having its own complete production program, Lindr still proclaims the visions of a family business, built with purely Czech capital.

DESIGN

Since the beginning, Lindr has been going its own way with original products, technology and unique design. Using high quality stainless steel in combination with natural hardwood leads to entirely original and ageless design.

QUALITY

Lindr is aware of the quality of Czech beer and of the beer culture. In order to be proud of this world top position, and to increase this quality with our products, Lindr has been using only certified materials and raw materials meeting the strictest demands for the hygiene and CE standards, which guarantee high quality, reliability, long working life and ageless design.

INNOVATIONS

Both ideas and innovations of Lindr have been highly successful on the Czech, European and world markets. Lindr's development and innovations always includes the requirements and experience of its customers, and the company keeps the best ratio of performance / quality / ease of use / design / price.

Every year the company enriches the market with entirely original innovations. At present, Lindr has the widest range of dry beer coolers and machines with the smallest dimensions as for the given performance on the European market. The whole range has over 400 versions and countless modified and personalised options.

DISPENSE TOWERS LINDR

A varied range of dispense towers designed for pouring beer and connection with undercounter beer coolers. These towers differ not only in design, but also in the number of taps.





ANTIQUE BEER TOWERS & TAPS



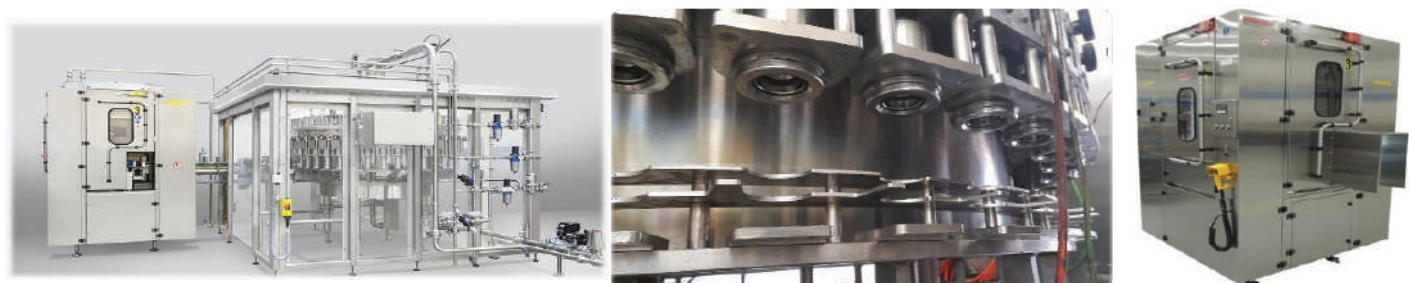
Combi FP & KWF



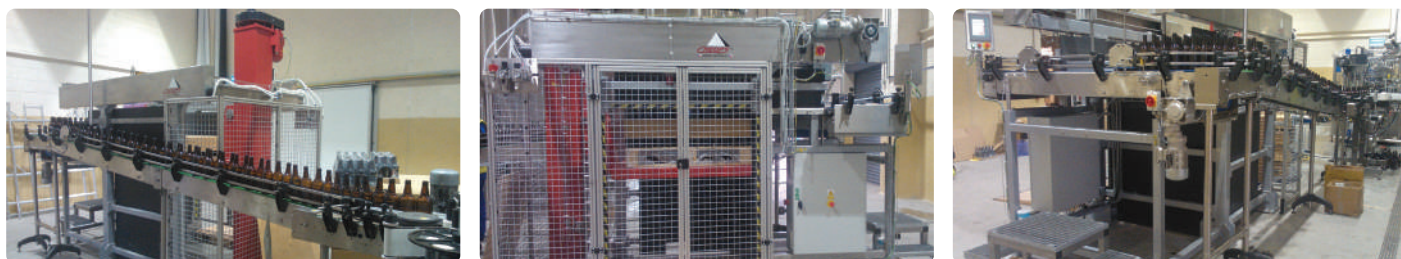
DAW



Bottling & Canning



Palletizer & Depalletizer



Case Packer



Shrink Wrapper



Sleeve Applicator



Wrap Around Labeller



Turner Table



Hologram Applicator



Shrink Tunnel



Belt Conveyor



Slate Conveyor



Cartton Sealer



Air knife dryer



Batch Coder



Can Rinser Twister



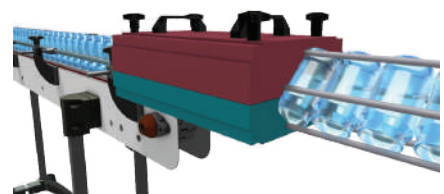
Tunnel Pasteuriser



Bottle Labeller



Block Turner



Pipeline Purple Professional Beer Line Cleaning Powder

Powder version of our concentrated classic original alkaline beer line cleaner with built-in solution status indicator and bactericides for quick and efficient application and long-lasting effect. It contains no caustic soda and is suitable for use on all beverage dispense equipment. Pipeline Purple Professional Beer Line Cleaning Powder reduces carbon footprint and use of plastic packaging as well as reduces shipping costs. It is safe to use on all types of line materials, pipes, meters, pumps, beer engines, taps and fittings if used in the prescribed manner.

PRODUCT SPECIFICATION

Name:	Pipeline Purple Professional Beer Line Cleaning Powder
Product Code:	D-PPPBLCP0.1K
Product Size	100 g
Packing Quantity	100
Packing Size (L x H x D cm)	32.5 cm x 22 cm x 25 cm
Shipping Weight (kg)	11.2 kg
Shipping Volume (m ³)	0.018 m ³

This product is available in other sizes

How to use

Dilution Rate: Each sachet contains a pre-measured amount producing 10 litres of cleaning solution to be used for regular cleaning regimes. It is extremely effective on dispense systems that may be severely soiled or have been neglected.

Cleaning: Switch off coolers. Use a pre-measured sachet(s) of Pipeline Purple Professional Beer Line Cleaning Powder for the correct dilution. Make up the cleaning solution in a plastic or stainless-steel container or cleaning vessel with cold or warm water (<40°C). IMPORTANT Pre-fill the cleaning vessel with a minimum of 1 litre of water per 100 g sachet, keep the water flowing and gently sprinkle in the powder. Once the powder has completely dissolved, pump solution through the dispense head into a white plastic receptacle such as a Pipeline Bucket until emergent solution is purple. Soak for a minimum of 10 minutes then draw a full line of the discoloured fluid until purple colour is evident. Repeat the process until purple colouration is stable throughout the dispense system.

Rinsing: Pump fresh cold water through to disperse all the purple fluid followed by a further litre of water. Verify the purity of this water using Pipeline Rinse Water Test Papers: Dip paper under the running water. If there is a trace of Pipeline Purple Professional Beer Line Cleaning Powder in the water, the test paper will turn purple. If the paper stays pink no cleaning solution remains and rinsing is complete. Switch coolers back on. Reconnect the dispense product.

Pipeline Purple Professional Beer Line Cleaning Powder - UN3262 CORROSIVE SOLID, BASIC, INORGANIC, N.O.S.

DANGER – Harmful if swallowed. Causes severe skin burns and eye damage. May cause respiratory irritation

PRECAUTIONS – Keep out of reach of children. Do NOT breathe dust. Wear protective gloves/protective clothing/eye protection/face protection.

IF IN EYES: Rinse cautiously with water for several minutes. Remove contact lenses if present and easy to do – continue rinsing. Get immediate medical advice/attention.

IF SWALLOWED: Rinse mouth. Do NOT induce vomiting. Get immediate medical advice/attention.

IF ON SKIN (or hair): Take off immediately all contaminated clothing. Rinse skin with water/ shower. If skin irritation occurs: Get medical advice/attention. If medical advice is needed, have product container or label at hand.

If skin irritation occurs: Get medical advice/attention. If medical advice is needed, have product container or label at hand.

Contains: Sodium Carbonate, Potassium Hydroxide, Potassium Permanganate



Scan for
Safety Data



- ▶ Professional strength
- ▶ Changes colour when the line is dirty
- ▶ No Caustic Soda
- ▶ Reduces shipping costs
- ▶ Reduces carbon footprint and use of plastic packaging



Wear eye protection



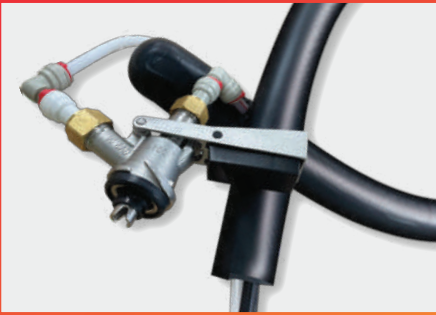
Wear hand protection



Use Pipeline test papers to ensure water purity



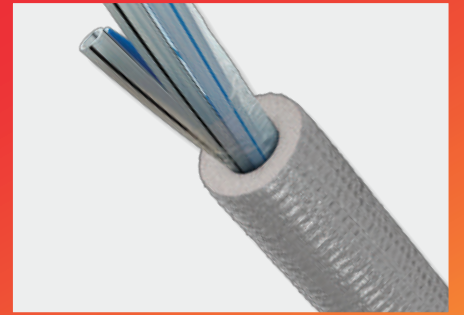
Store in a cool and dry environment



**BEVERAGE PYTHON
KEG DROP LINE**



**BEVERAGE RHINO
PYTHON**



**BEVERAGE EVENTS
PYTHON**



**BEVERAGE MINI-LOOMS,
TRACE COOLING &
PREFORMED TUBING**



**BEVERAGE TUBE
RANGE**



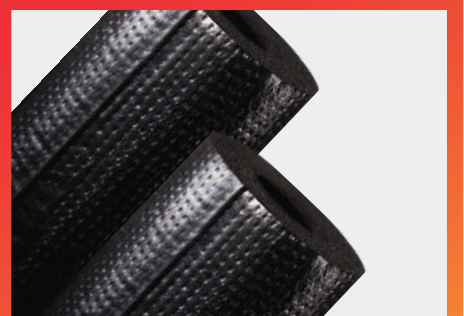
**BEVERAGE PASSIVE
FIRE PRODUCTS**



PYTHON CUTTERS



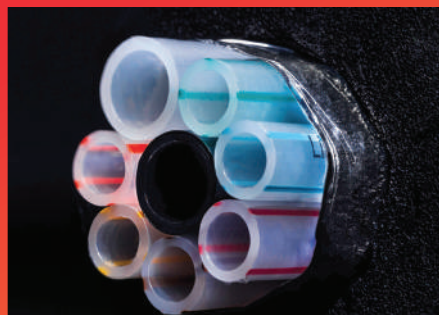
**TUBE IN TUBE
PYTHON**



TITAN



ST



PYTHON TUBES



**BEVERAGE FLOODED
PYTHON**

Our Channel Partners



botlr



PENTAIR



LUKR



**beer
PIPER**
THE CLEAR ADVANTAGE



K-FLEX

Corp. Office : SpectraA House, 17/7 Ali Asker Road, Cunningham Rd, Bengaluru, Karnataka 560052



080 41482553



sales@lumieretec.com



lumieretec.com



#Lumieretec